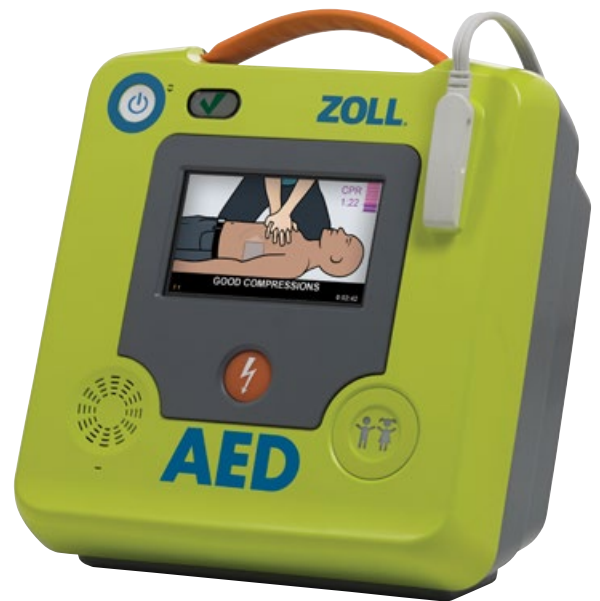




ZOLL AED 3 Defibrillator

Designed by **ZOLL Medical Corporation**

The all-new ZOLL AED 3 Automated External Defibrillator makes the best even better, with improved and automated support.



Company Profile

MineARC Systems is the global leader in the manufacture and supply of emergency safe refuge solutions for the mining, tunnelling, chemical processing and disaster relief industries.

With over 20 years' experience, our dedication to ongoing research and development is driven by our key focus to continually offer the best and most advanced safety solutions on the market.

Our team of qualified engineers, electrical designers and technical experts form a global network across several international locations including;

- Perth, Western Australia
- Johannesburg, South Africa
- Dallas, Texas
- Santiago, Chile
- León, Mexico
- Beijing, China
- Reading, UK

This allows MineARC to provide 24 hour service and engineering support to our expanding list of clients in over 60 countries across the globe.

All MineARC Refuge Chambers and Safe Havens comply with the highest international regulations and recognised 'world's best practice' industry guidelines. Our key focus on quality control and product advancement has meant that MineARC Refuge Chambers have successfully saved lives in multiple real life industrial emergencies around the globe.

www.minearc.com



It happens in a split second. Is your team prepared to help?

When sudden cardiac arrest occurs, the fact is that only half of the victims will need a shock, however all will require cardiopulmonary resuscitation (CPR).

For most, performing CPR will be a rare and stressful experience. With the new ZOLL AED 3 Defibrillator, users are guided through the process of performing high-quality CPR and if needed, will deliver a potentially lifesaving shock to the heart.

- Measure chest compressions with Real CPR Help technology
- Back-lit display with audio visual prompts
- One-size fits all one-piece electrode pads to simplify placement
- Five-year shelf life
- Ruggedised case for industrial environments
- Comprehensive training kits for on-site staff education

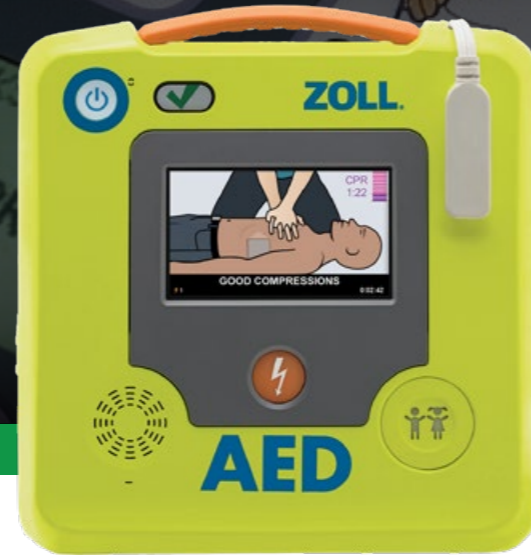
The ZOLL AED 3 builds on ZOLL's reputation for providing rescuers with unmatched support and a low total cost of ownership; embodying all of the same great qualities of other ZOLL units, while offering advanced features.

Discover how the ZOLL AED 3 can improve the safety of your site.

ZOLL AED 3 Defibrillator

The latest American Heart Association (AHA) Guidelines, issued in 2010, are clear: successful defibrillation requires high-quality CPR performed at the proper depth and rate.

Whether a shock is advised or not, rescuers should focus on delivering compressions correctly; as only good CPR can restore the heart rhythm to one required for a shock to work.

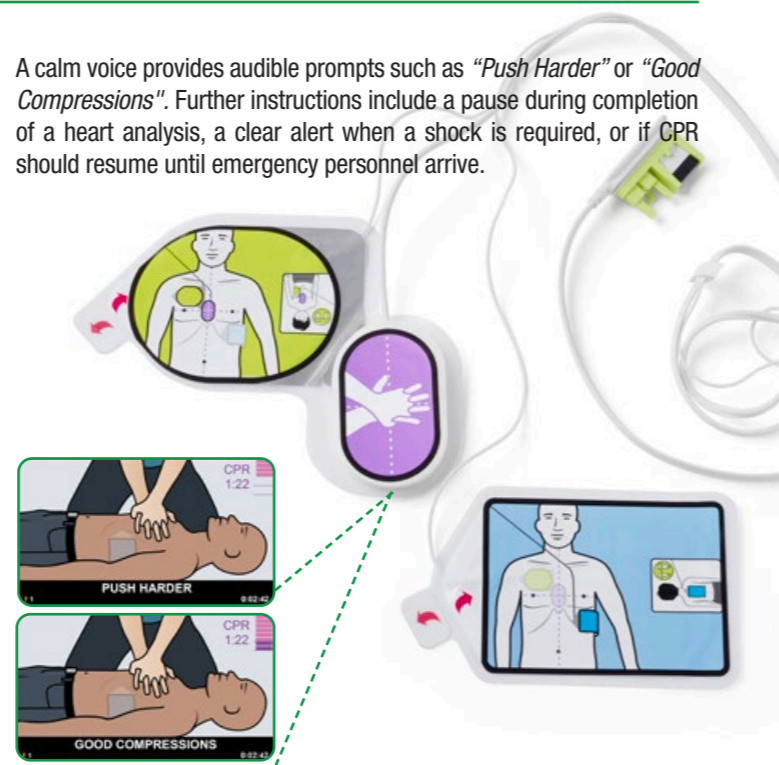


Enhanced Real CPR Help® Technology

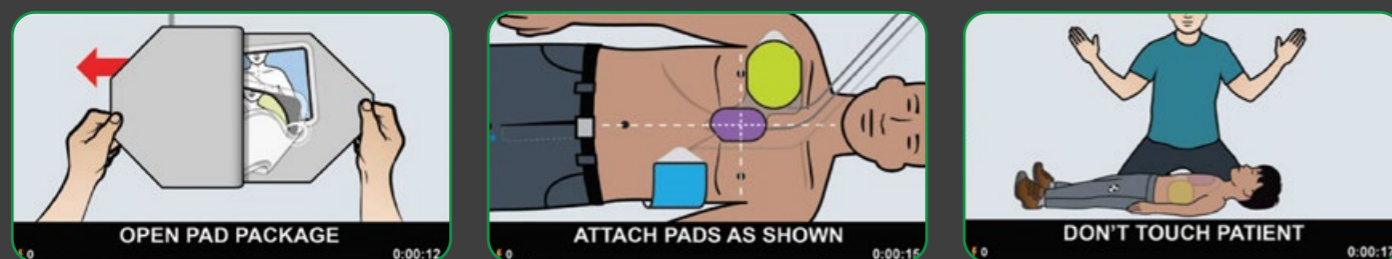
The AHA Guidelines recommend that rescuers push hard to a depth of at least 5 centimeters at a rate of 100 compressions per minute. This is easier said than done. The AED 3's Enhanced Real CPR Help technology features a full colour display with vivid rescue images, a CPR cycle timer and a large color bar gauge that shows compression depth.

A calm voice provides audible prompts such as "Push Harder" or "Good Compressions". Further instructions include a pause during completion of a heart analysis, a clear alert when a shock is required, or if CPR should resume until emergency personnel arrive.

- ✓ CPR Uni-padz contain a pair of electrodes, which sense and report the motion of chest compressions
- ✓ Full colour display with graphic image prompts, compression depth gauge and cycle timer
- ✓ RapidShock analysis, minimising pauses during CPR administration
- ✓ Integrated pediatric rescue with 'child mode' - no need for more equipment
- ✓ Wifi connected to easily manage multiple units



Clear, colorful graphic images combine with audio prompts to guide the user easily and precisely through the rescue:



ZOLL AED 3 Defibrillator

While only 50% of sudden cardiac arrest victims will initially need a shock, 100% will require CPR to increase the flow of oxygenated blood to the heart and brain.

How can rescuers tell if they are providing high-quality CPR? A ZOLL AED 3 device with Real CPR Help lets rescuers know if they are doing compressions at the most effective rate and depth. Integrated real-time feedback eliminates guesswork; keeping rescuers on track to administer CPR.



WIFI CONNECTED FOR MULTIPLE DEVICE MANAGEMENT VIA THE CLOUD

BACK-LIT DISPLAY SCREEN PROVIDES GRAPHIC IMAGERY WITH EVERY AUDIO PROMPT

CHILD MODE ACTIVATION FOR PEDIATRIC RESCUE

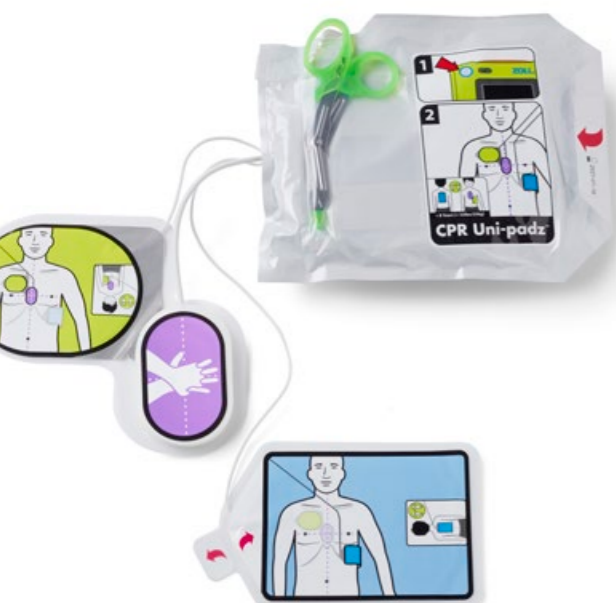
CPR UNI-PADZ FOR QUICK, EASY APPLICATION, NO MATTER THE SIZE OR AGE OF THE PATIENT

PULL-TABS EXPOSE CONDUCTIVE GEL, LIMITING CONTAMINATION

ZOLL AED 3 Defibrillator

RapidShock Analysis

ZOLL's RapidShock Analysis enables the industry's shortest rhythm analysis for more continuous lifesaving CPR. It has been medically proven that minimising pauses improves CPR quality and patient outcomes.



One Size Fits All

With an industry-leading shelf life of five years, the universal design of the AED 3 CPR Uni-padz electrode pads gives rescuers a single, confident solution for both adult and pediatric victims.

To treat a child, use the same set of electrode pads and simply activate child mode. You will be prepared if your victim is seven months old or 70 years old.

Intelligent Design, Providing Peace of Mind

ZOLL's Program Management solution enables the management of one or multiple AED 3 units via the cloud with integrated WIFI connectivity; providing seamless automated monitoring of battery and pad expirations as well as immediate notification of a failed self test.

The AED 3 smart battery that can also report its power level status on the device's LCD screen. Lasting up to five years once installed and at a price of less than half of competitive smart batteries, provides significant costs savings as well as emergency readiness.

Specifications

- **Patient analysis:** RapidShock 3 seconds
- **Pre-shock pause:** Under 5 seconds
- **Patient safety:** All connections are electrically isolated
- **Self-test:** Configurable
- **Display:** Large colour touchscreen
- **Rescue images:** Full-colour images
- **Dimensions:** 1270H x 2360W x 2470Dmm ; 2.5kg
- **Operating temperature:** 0-50°C
- **Storage temperature:** -30-70°C
- **Shock:** IEC 68-2-27: 100G
- **Particle and water ingress:** IP-55

Mounting and Storage Options

Choose from a range of mounting and storage options available, including steel and clear wall cabinets and aluminium wall brackets.

Soft and hard carry cases are also available; allowing quick and easy transport of the AED 3 in times of need.



ZOLL AED 3 Defibrillator

Train Your Team

The ZOLL AED 3 Trainer is the only automated external defibrillator training solution that provides Real CPR Help and real-time feedback on a trainee's compression quality.

The Trainer allows students to learn proper rate and depth of CPR chest compressions, whilst closely mimicking the operation of the clinical AED; offering a more realistic rescue experience.

The addition of an on-device pause button allows the instructor to pause a training scenario, providing time for feedback and questions.



In the Field: Coworkers Save Colleague at Industrial Plant

“Guy down,” echoed through the facility of the Bemis Company in Boscobel, Wisconsin. The operations partner at the plant had just witnessed his colleague collapse. The 60-year old employee was lying on the floor turning blue and purple. His eyes were glazing over. He had no pulse.

The operations partner immediately alerted the plant's environmental health and safety (EHS) manager, and employees sprung into action. One employee called 911 and contacted plant management, while the EHS manager performed an initial assessment on the victim and began cardiopulmonary resuscitation (CPR).

Another employee ran to retrieve the automated external defibrillator (AED) mounted on the wall 30 yards away, while yet another secured the valve mask for giving ventilations and cut away the victim's shirt so he'd be ready to apply the electrodes.

Once the ZOLL AED Plus® arrived, the EHS manager briefly stopped CPR while a fellow employee hooked up the unit. One person continued to monitor the victim's pulse as another immediately began monitoring the AED Plus' audio and visual prompts.

The AED Plus soon advised a shock, which was administered. While the employee response was immediate, the victim's response to CPR and the shock was not. The EHS manager resumed compressions, as the AED Plus instructed. The AED provided him with feedback on the quality of chest compressions. The adaptive metronome also helped

him maintain the correct rate.

Within 45 seconds, the victim took a deep, gasping breath. “It was pretty amazing,” the EHS manager said.

“It was the shock that brought him back to life. He went from blue to pink.”

As color returned to the victim's face, the Boscobel rescue squad arrived and took control of the scene. They administered oxygen and kept the AED Plus attached in case it needed to be used again.

“The AED is so simple to use,” said the EHS manager. “Easy-to-read graphics, very clear directions, and clearly marked electrodes showing where to place your hands for chest compressions made it very easy to continue CPR. It directed us during a stressful time.”

The response from employees went like clockwork because Bemis has a comprehensive environmental health and safety program in place. “Everyone knew just what to do since we had practiced drills,” said the EHS manager, who had been overseeing the program at the 170,000-square-foot plant for more than a decade. While 10 employees participated in the actual rescue, several additional people were at the scene, trained in CPR, first aid, and the use of the AED, to offer help if needed.



MineARC Systems - Built for Safety.

www.minearc.com

